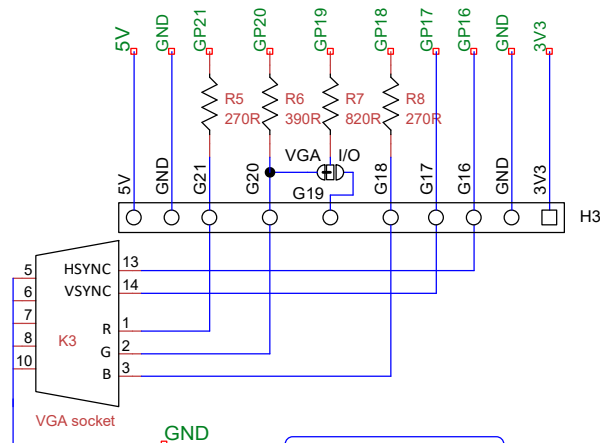
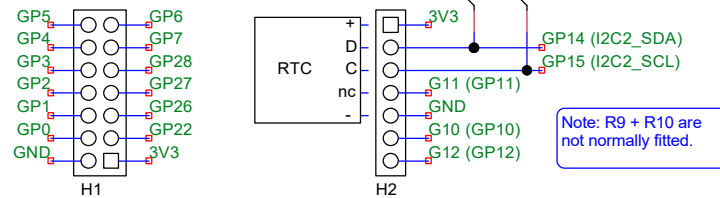
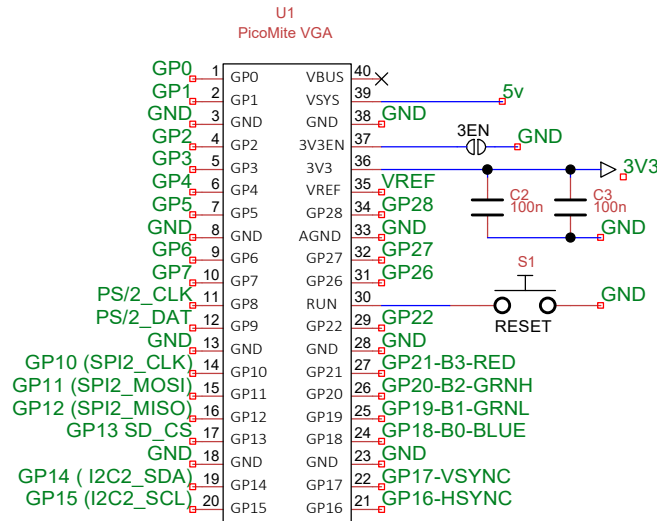


LEVEL SHIFTER

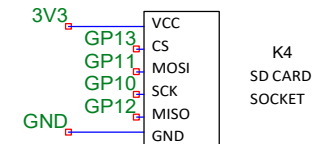
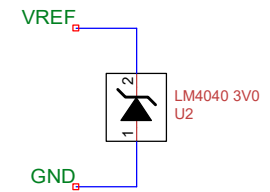
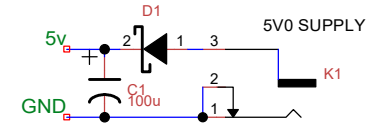
Note: 2N7000 will usually work and has same pinout. BS170 will work, but 1 and 3 are reversed.



Note:
H3 fitted for Control version
K3 fitted for VGA version



Note: R9 + R10 are not normally fitted.



Title PicoMite VGA XPerimenter		
Author Mixtel90		
MMBasic by Geoff Graham + Peter Mather		
File Z:\Documents ... PicoMite VGA XPerimenter.dsn	Document	
Revision 0	Date 27 August 2022	Sheets 1 of 1